



**Cabinet**  
15 November 2016

**Report from Strategic Director of  
Regeneration and Environment**

Wards affected: ALL

**Safer Brent – MetPatrol Plus Scheme**

**1.0 Summary**

- 1.1 During the 8 May 2016 Safer Brent Partnership (SBP) meeting, the SBP chair recommended that the board progress addressing the option for investing in the MetPatrol Plus scheme. The main purpose for this is to develop options for how the board can develop and operate more purposefully to deliver the key priorities and statutory obligations.
- 1.2 Partners fed ideas into the board meetings regarding this option, as well as addressing what the main objectives for this scheme could focus on for Brent. Partner contributions were also discussed and although minimal contributions were put forward, the general consensus of the board agreed that this was a scheme worth investing in if possible, and the council would take this option forward for consideration. The council Corporate Management Team have been consulted and also agree that this is a scheme worth investment. Revenue Budget growth appears likely to be agreed to fund this scheme for Brent.
- 1.3 This paper considers what objectives the MetPatrol Plus scheme could meet, and the contributions SBP partners could provide.

**2.0 Recommendations**

- 2.1 That the options are addressed in this paper regarding how the Safer Brent Partnership board can develop and operate more purposefully, making Brent Safer.
- 2.2 That Cabinet give its approval to enter into the proposed Section 92 (of the Police Act 1996) Partnership Agreement and to approve the terms underpinning the scheme, if a growth bid was to be approved.

### **3.0 Detail**

#### **3.1 Safer Brent Partnership**

3.11 The Safer Brent Partnership (SBP) has a statutory obligation to create a strategy for the reduction of crime, drugs, reoffending and disorder in the area, which is annually reported on.

3.12 On 2 December 2014 the Safer Brent Partnership agreed that the following themes should be prioritised:

- Reducing Violence against Women and Girls
- Reducing Gang-related offending
- Reducing Anti-Social Behaviour
- Reducing Reoffending
- Preventing Radicalisation
- Reducing and Preventing Child Sexual Exploitation

3.13 The above priorities will be reviewed December 2016, however many of the same priorities still exist.

#### **3.2 MetPatrol Plus Scheme**

3.21 The MetPatrol Plus scheme proposes to enhance outcomes in terms of the overall statutory obligations as above, as well as gaining better outcomes for the agreed priorities.

3.22 In 2008 the London Borough of Newham became the first London Borough to secure the services of Metropolitan Police Officers, under section 92 of the Police Act 1996, funded by the council to provide additional policing within the borough. This was part of the Mayor's priority to address serious anti-social behaviour. Since the initial ground breaking agreement in Newham the enforcement capacity, capability and effectiveness of the council, supported by these funded officers, has proven highly beneficial and valuable.

3.23 The scheme, now known as 'MetPatrol Plus' offers a match funding opportunity, i.e. 'Buy One Get One Free', e.g. buy two Police Officers, get two free, totalling four Police officers.

3.24 Many other London boroughs have highlighted their plans to invest in additional MetPatrol Plus scheme s.92 Police officer resources via signing up to the MetPatrol Plus scheme due to the positive outcomes which have been achieved elsewhere. I have been informed that the only boroughs not currently investing in this scheme, other than Brent, are Barnet, Bromley, Harrow, Havering, Lewisham, Wandsworth and Richmond. The positive sign up to this scheme from many London Boroughs promotes the positive outcomes achieved by this scheme in terms of helping to reduce crime and disorder (see section 3.46).

3.25 The general consensus feedback is that Community Safety Partnerships feel restricted by Police working towards wider MOPAC outcomes, rather than local needs and outcomes. This would localise Brent outcomes.

#### **3.3 Scheme Objectives and Resource**

- 3.31 The main objectives for s.92 officers funded by other London Boroughs have generally related to reducing the overall level of crime, especially violent and alcohol/drug related crime. However most areas have developed these to focus on locally identified problem areas. Below highlights examples of more specific objectives set in other boroughs, utilising this provision:

*Newham:*

- Increase levels of enforcement activity on the borough.
- To bring about better commercial regulation.
- Reduced levels of crime and anti-social behaviour.

*Camden:*

- Reduce the impact of antisocial behaviour associated with the Night Time Economy on local residents.
- Improve the level of confidence and feeling of safety amongst the public and businesses.
- Make victims of domestic violence and antisocial behaviour safer.

*Kensington and Chelsea:*

- Exclusively dedicated to tackling low level Crime and ASB, reducing impact on victims and on local residents, and enforcing PSPOs.

*Lambeth:*

- Increase levels of enforcement activity for priority issues relating to violent crime on the borough.

*Hackney:*

- Dedicated to increasing Crime Prevention mechanisms on the borough.

### **3.4 What this means for Brent?**

- 3.41 The recent council Outcome Based Reviews conducted was informed by various focus groups, in-depth interviews with residents, partners and professionals around Harlesden. Feedback acknowledged the resident community need and request for a 'Cleaner, Greener, Safer' Brent. The desire for a Safer Brent was cross cutting throughout all communities and all age groups, as example quotes below highlight:

- *"Women are intimidated by large groups of men – it doesn't feel safe."*
- *"More community police would make a difference, especially when kids come out of school."*
- *"There is a different mentality here, like a sort of harassment. I don't go out alone at night. There just aren't enough police around".*
- *"After 9pm the drinkers come out – people stop my mum when she is out at night."*
- *"There is a lack of enforcement, dispersal orders are not being enforced especially at the weekend."*

- 3.42 The MetPatrol Plus scheme would primarily help towards making Brent Safer, and provide our residents with responses and reassurance which they are hoping for.

- 3.43 The aims and objectives for Brent should focus on Borough wide issues to

maximise the outcomes. Partners have been consulted regarding what these objectives may look like. In general terms, many partners referred to objectives relating to the agreed six SBP objectives in section 3.1. Example measurements for s.92 officer objectives set against several Brent partnership specific priority issues can be seen in Appendix 1.

3.44 Our Violence with Injury incidents (Appendix 2) have been increasing over the past 12 months (as many other London boroughs have also seen). In the past 12 months we have seen a 6.3% increase in Lethal-barrelled gun discharges, a 14.2% increase in knife crime, and an increase in knife injury victims – all linked to gang crime. Violence with Injury figures also include our rise in domestic abuse incidents. Furthermore, Police ASB calls (see Appendix 2) have also seen a 5.4% increase over the past 12 months. These statistics therefore highlight the need for extra support in terms of enforcing and focusing on such SBP priorities. Not only are residents feeling the effects, but the data is highlighting the need. The council have started many new interventions and techniques to reduce these issues however the council cannot enforce criminal law.

3.45 Appendix 1 highlights the extra benefit in terms of additional achieved outcomes across an array of partner priorities, which this additional MetPatrol Plus asset could provide. For example, in Newham the enforcement and engagement/prevention capacity, capability and effectiveness of the council, supported by these funded officers, has proven highly beneficial and valuable. Local residents, businesses and visitors have also responded positively to the council Law Enforcement Officers, who maximise on enforcement visibility around the borough.

3.46 A summary of key enforcement output outcomes<sup>1</sup> for the Newham s.92 Officers for 2014/15 included:

- Arrests – 1,375
- PNDs - 479
- FPNs - 245
- Uninsured vehicles seized - 233
- Stop searches – 1,776
- Partnership operations - 254
- Stop and accounts – 1,831
- Prostitute cautions - 218
- Alcohol Seizures - 275
- 80 brothels closed
- Over 300 immigration arrests

3.47 Following such positive interventions from this model, Newham have recently proposed to increase their s92 Officer team from 16 to 66, funding an extra 25 officer posts (and getting an extra 25 officers free). Given the above positive outcomes.

---

<sup>1</sup> Please note the achievements were reflective of their 16 s.92 officers, Brent are requesting to utilise 12 s.92 officers and therefore potential outcomes cannot be fully comparable.

3.48 Outcome measurements for Brent would be more specific, based on SBP priorities. Outcome outputs will be reported back to the SBP at each board meeting to govern productivity and operations. Outcome measurements for Brent, agreed with Brent Police can be seen in Appendix 3. Small amendments may be made if this were to commence operations, based on requirements and appraisal.

3.49 The implementation timescales to have this extra resource to help make Brent safer on borough would be between 3-6 months from the time all signed

of the s.92 officers could however be in being signed. agreements were completed. Up to six post within 4 weeks of the agreement

3.50 The standard minimum term agreement is a three year agreement, however the agreement comes with a six month termination clause. Therefore provided that the London Borough of Brent provide notice of termination within the first 18 months of the agreement, we can run the scheme for only two years. If circumstances change and we wish to run the full three years, we would be able to rescind that termination at a later point. This is a practice that a number of Local Authorities adopt due to no long-term certainty over budgets.

## **4.0 Resource**

### **4.1 Partner Contributions**

4.11 SBP Partners have been consulted on what contributions could be made for this SBP asset to be implemented in Brent. Many partners were not in a position where they could offer remunerator contributions. Some partners have offered to contribute some resource towards this scheme, highlighting their support for the progression of this option to benefit SBP priorities. This resource however will not be additional revenue resource towards this scheme.

4.12 Brent Police would offer an additional resource to allow us to form two teams of Additionally, Police would look to overlay existing Neighbourhood Tasking Team (1:6) when shifts allowed to support bespoke dedicated MetPatrol Plus s.92 teams, to further increase resource. Coordination of this resource is detailed in section 8.3 and 8.4.

4.13 Option 1 in financial implications would therefore be the more favourable option, as with the Police contribution, we would be able to form two Policing teams of 1:6 which is the equivalent to one carrier, the desired numbers to successfully operate.

### **4.2 CCTV**

4.21 Other required resource would be the requirement of intelligence fed from our borough CCTV systems, into the tasking operations for the s.92 officers. Coordination of the MetPatrol scheme would require a robust intelligence input to ensure we were targeting the main hotspot vulnerable locations, focusing on area based deployment.

4.22 Our CCTV intelligence feeds into create evidence needed, and therefore would be a large part of this Safer Brent scheme moving forward. The CCTV

consultation from 2015 however highlighted our cameras were archaic and require an upgrade to ensure operational longevity and value for money, as well as enhance our capabilities and income generation opportunity. A business case for proposed capital investment for our CCTV is currently being progressed through the Capital Investment Panel.

## 5.0 Financial Implications

- 5.1 Table 1 below summarises the costs quoted by the Met Police to secure services under the MetPatrol Plus scheme. The costs quoted are provided directly from the Met Police commercial contracts team. These include on costs such as: unsocial hours payment, uniform costs, support, pension contribution, accommodation allowance, London allowance and London weighting, plus basic pay. To achieve the desired outcomes detailed in this report, revenue growth of around £400k per annum would be required to create and implement this scheme in Brent.

*Table 1: Costing options for possible Brent MetPatrol Plus:*

Team	MetPatrol Plus Options - Brent	
	OPTION 1	OPTION 2
Rates	2016/17	2016/17
PC	£ 66,000	£ 66,000
PS	£ 78,000	£ 78,000
Insp (Police contribution)	£ 95,000	£ 95,000
Number of officers		
PC	5	4
PS	1	1
PLUS MetPatrol Plus PCs free of charge	6	5
<b>TOTAL OFFICERS SUPPLIED</b>	<b>12</b>	<b>10</b>
Grant per annum	£ 408,000	£ 342,000

- 5.2 No partner contributions have been secured in relation to the proposed implementation of this scheme. The scheme does not meet criteria for external funding streams available to Community Protection for prevention of crime and increased safety, which are specific grant funding streams.
- 5.3 There would be an element of income generation through fines that could contribute towards costs<sup>2</sup>, but this would not be material to expected costs and there would need to be commitment from the council to fund the majority of the scheme.

<sup>2</sup> The Newham model generates a heightened income for the Partnership due to increased enforcement resource. In 2015/16, their 16 s92 officers generated FPN income of £9,600, based on 245 FPN issued by such officers.

5.4 Costs included in Table 1 are reflective of 2016/2017 prices, prices for 2017/18 and 2018/19 have not been confirmed. The Police Remuneration Review Body have recommended a 1% increase to police pay for 2016/17 and could result in additional cost pressure in those years.

5.5 The amount payable for each year of this three year agreement will be based on the annual rates pro-rata across the term of the contract. Based on implementation timescales (see 3.48), financial impact of implementing the scheme in 2016/17 would be 25% of quoted full year costs.

## **6.0 Legal Implications**

6.1 Section 92 of the Police Act 1996 (as amended by the Police Reform and Social Responsibility Act 2011) gives a local authority the power to make grants to a police force whose police area falls wholly or partly within the borough of Brent, either unconditionally or with the agreement of the Chief Officer of Police, with conditions.

6.2 A section 92 Police Act 1996 Agreement with the Metropolitan Police Authority has been reviewed by the council's Legal Services department. The Chief Officer of Police is not obliged to accept the grant with conditions. The additional police officers will remain under the operational control and direction of the Metropolitan Police Service; however there must be agreement from local borough Police for this council funded resource to be coordinated in conjunction with the council, and only for SBP agreed priorities which will be fed through the Community Protection service.

6.3 Once agreement for this scheme has been made, and funds made accessible, a letter of intent highlighting the number of officers to be required would need to be made to the Met Police, followed by the formal s92 agreement. A letter of intent would be the next stage, if this were to be an agreed scheme for Brent to progress. Ordinarily officers would agree the terms of the proposed agreement and seek approval to enter into such agreement from Cabinet (as the value is likely to be classified a High Value Contract [Contract Standing Orders 85 (c)] prior to the service commencing, therefore negating the need for a formal letter of intent. In any event should a letter of intent be required as part of the funding process then such letter must be approved by the Monitoring Officer in accordance with Contract Standing Orders 109.

6.4 For information, the proposed section 92 Police Act 1996 Agreement sets out that the grant (should Members agree to fund the scheme) does not include any elements covering overtime that may be requested of relevant Police Officers under this scheme, that would be an additional expense for the council should overtime be requested.

## **7.0 Diversity Implications**

None

## **8.0 Staffing/Accommodation Implications**

8.1 If the scheme were to be implemented, thoughts around the coordination and management of the MetPatrol Plus partnership tasking groups have been

discussed with Police partners. In terms of which partner and which team would coordinate the tasking groups, monitor and manage performance and where that team would be accommodated.

- 8.2 The ideal base location for this additional partnership resource would be the civic centre. Partnership ASB, licensing, MASH and YOS Police officers are already based within Civic Centre teams. Brent Police agree that this could be agreed and have confirmed that the resource would be better coordinated solely for this purpose if away from their main borough resource. Various locations within the civic centre are being considered as the base would need to be a closed private, secure area.
- 8.3 The SBP would need to have ultimate Governance over this resource as this would be a resource funded by the council. Operational tasking would be directed by the inspector, however recommended to be managed by the Community Protection service, in partnership with the Police. Police have agreed with this concept.
- 8.4 Direction would come from agreed priorities at the SBP meetings, fed through the Community Protection service who would consult fortnightly with the Police Tactical Tasking Coordination Group to agree our MetPatrol Plus operational tasking.

### **Contact Officers**

Karina Wane  
Head of Community Protection  
Regeneration and Environment

Amar Dave  
Strategic Director Regeneration and Environment

AMAR DAVE  
Strategic Director Regeneration and Environment

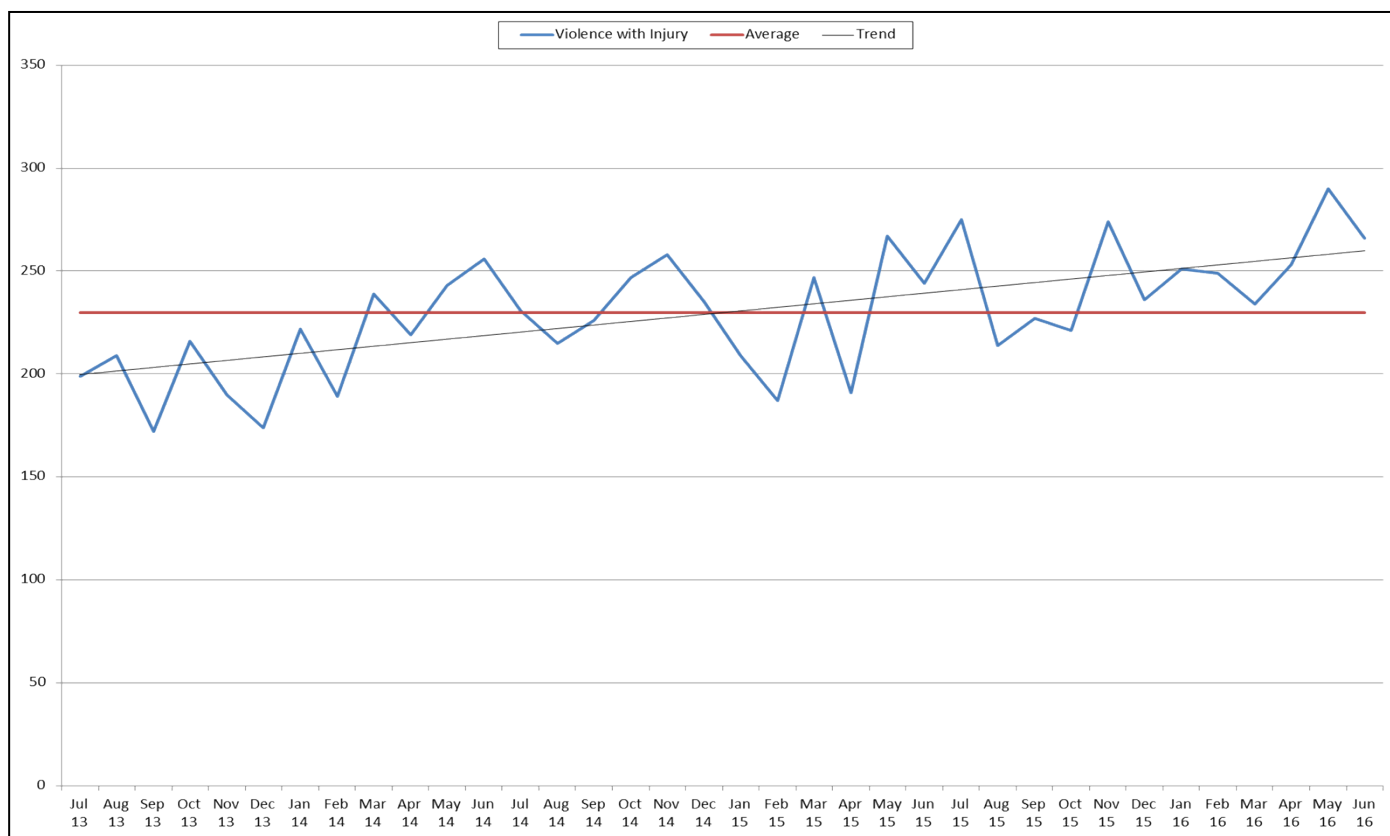


## Appendix 1

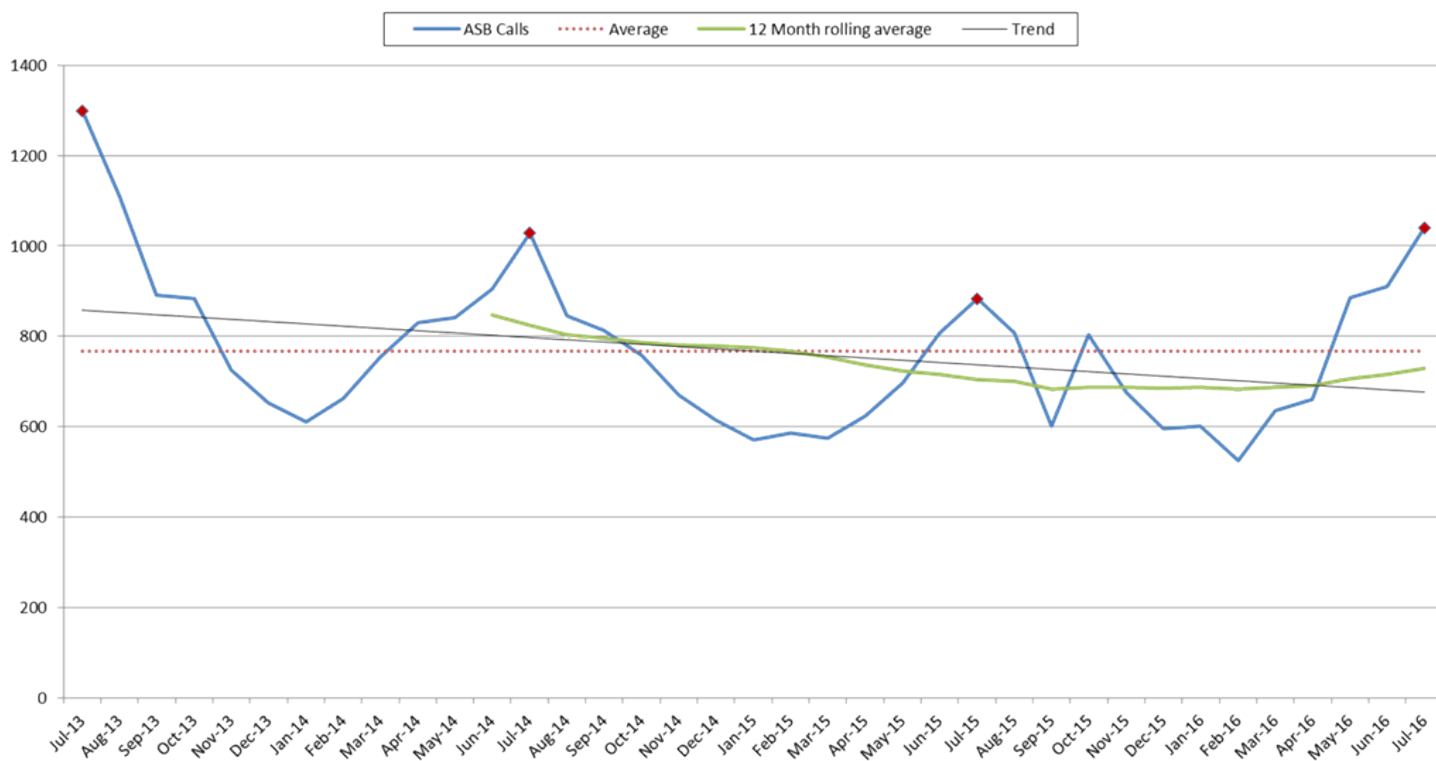
Activity Benefited	Measure
Ace Café Partnership action	Increase in number of deployment operations, FPNs issued and s.59 vehicle seizures, reduction in ASB.
Shisha Cafes Partnership action	Increase in number of joint visits with LA departments (planning, trading standards, LFB) etc. Increase in number of cautions/successful prosecutions.
Brothel Interventions	Increase in number of closure orders/brothels closed. Number of EXIT street prostitution referrals, sex workers exiting street prostitution, positive outcomes including ETS.
Operation Ajutor (Joint patrols with LA enforcement and Kingdom)	Reduction in ASB incidents, number of FPNs issues, (income generation re coach seizures).
Kingdom Commissioned Service (Joint patrols)	Number of FPNs/warnings issued for graffiti, paan spitting, littering, rubbish dumping, dog fouling etc.
Night Time Economy Partnership action (Euro 16 opportunities)	Increase in patrols with LA partners to recognised NTE hotspots - Planning, Regulatory Services, LFB and Outreach teams re Domestic Abuse (VAWG), ASB and joint Licensing teams - Outcomes re reductions in crimes, ASB, seizures, income generation, closure notices/orders and action plans/licensing reviews.
Focused ASB action	Decrease in ASB incidents. Increased patrols, increased joint LA patrols to progress Harlesden action plans, decrease in Shisha venue incidents, youth disorder and on street sex work.
Child Sexual Exploitation/ Missing Children	Increase in disruption/intervention notices issued. Increase in intelligence gathering, increase in joint enforcement and intervention visits. Increase in number of referrals to MASE panel. Greater opportunities re missing person de-brief and pro-active interventions.
Families, Children and Young People – Early Intervention/Crime Prevention	Increased joint visits for prevention/enforcement (e.g. working with Family Solutions). Increase in early intervention to support Integrated Offender Management/YOS and diversionary projects via LA.
Domestic Abuse (VAWG)	Increase in number of domestic abuse perpetrators arrested/diverted, increase in victims engaging in Criminal Justice procedures. Increase in arrests for outstanding perpetrators.
Youth/ Gang Diversion	Identified cohort diverted via increase in joint visits for prevention and enforcement. Increase in cohort engagement in services. Reduction in area based youth crime.
Reoffending	Increase in outstanding nominals arrested, increase in IOM support to further prevent reoffending for those on community sentence.

## Appendix 2

1. Police Violence with Injury data:  
Year on year rolling 12 month figures as of the 31/07/2016:



2. Police ASB Call data:  
Year on year rolling 12 month figures as of the 31/07/2016



## Appendix 3

### Brent Met Patrol Plus Scheme

#### Aim: To Make Brent Safer

The below outputs have been developed to capture how this additional asset will help to make Brent Safer, focusing and resourcing the Safer Brent Partnership priority outcomes.

Output	MetPatrol Measurement		Number	Period
1	Arrests	Violence With Injury		
		Hate Crime		
		Prolific Offenders		
2	CSE Interventions			
3	Partnership Operations			
4	Closure of Nuisance Premises	Shisha Venues		
		Crack Houses		
		Brothels		
		Licensed Venues		
5	HMO Enforcement			
6	Gang Disruptions	CBO Breaches		
		Proactive Tasking		
		Gang Injunctions		
7	Unauthorised Encampment Disruption			
8	Victim Engagement/Intervention			
9	PSPO	Proactive Policing		
		Warnings		
		FPNs		